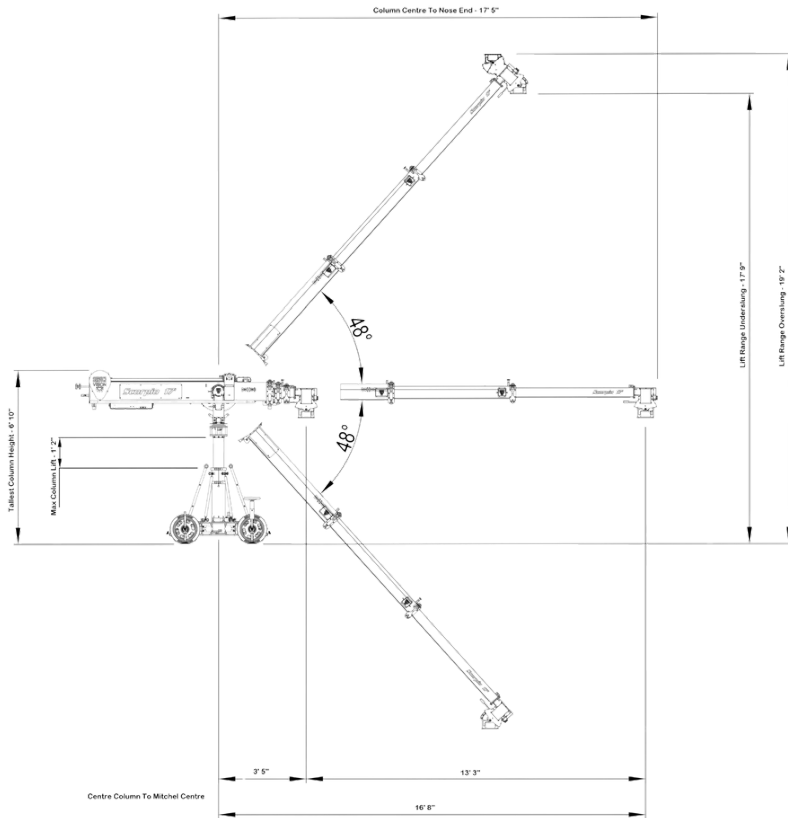


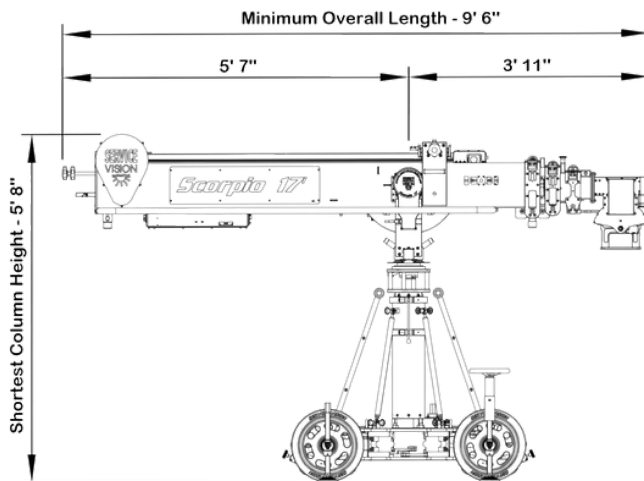


# SCORPIO 17

## ARC & TELESCOPE MEASUREMENTS

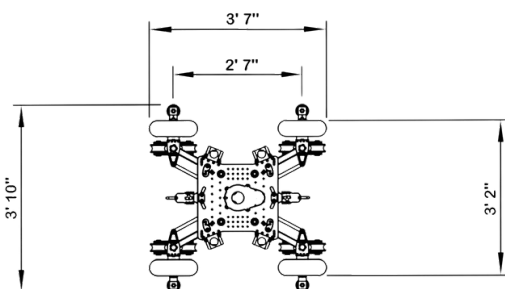


## SHORTEST LENGTH MEASUREMENTS

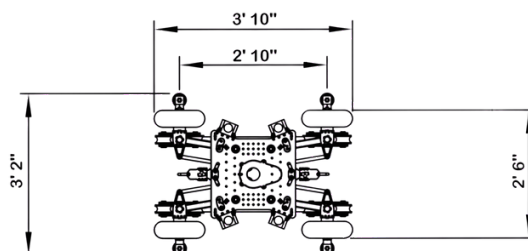


## BASE CONFIGURATIONS

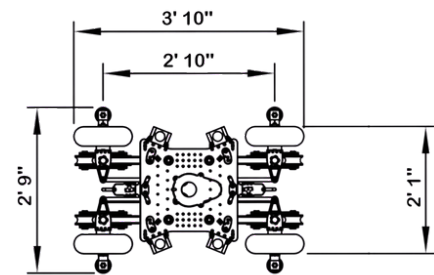
### STUDIO MODE



### NARROW STUDIO MODE



### TRAVEL MODE ONLY



## OVERVIEW

Designed for versatility and smooth telescopic movement, the Scorpio 17 is a lightweight, three-section telescopic camera crane built for dynamic production environments. Offering over 17 feet of reach with a responsive telescopic extension, it delivers strong lens heights in both overslung and underslung modes while maintaining a compact footprint. Its portable design, integrated telescopic column, and compatibility with advanced Scorpio control systems make it easy to rig, operate, and adapt to tight spaces or fast-moving setups.

## OPERATION MODES

The Scorpio 17 offers two methods of operation when paired with any of the following heads. **Scorpio EZ, Mini V Stabilised and Micro V Stabilised.**

### Single-Operator Mode

In this mode, the crane is operated in a similar way to a conventional Jimmy Jib. Head and lens controls are positioned at the rear of the arm, allowing the operator full control of both the remote head and crane movement. A dedicated technician independently controls the telescopic extension of the arm.

### Conventional Mode

Conventional mode is used when productions require complex or highly choreographed crane shots, such as scripted music performances. In this setup, a grip and technician manage the crane's movement, while the operator works from a control desk with full control of the head and lens.

## AR INTERGRATION

**Scorpio AR** is an optional system that can be integrated with the crane, enabling graphics companies to capture precise positional data. When paired with a Scorpio EZ Head, the AR system also transfers camera data, allowing the crane and camera to be accurately represented within a virtual environment. This enables seamless integration of real-world camera movement into augmented reality productions.

## REMOTE HEAD COMPATIBILITY

The Scorpio 17 crane is designed with full remote-head flexibility, making it a highly adaptable tool for film and television production. Its universal mounting interface and robust payload capacity allow it to support virtually any remote head, from lightweight gyro-stabilised systems to larger, high-precision heads.